

# MATAU - Manual Test Automation

Automation and assurance of ASPICE compliant processes in vehicle testing

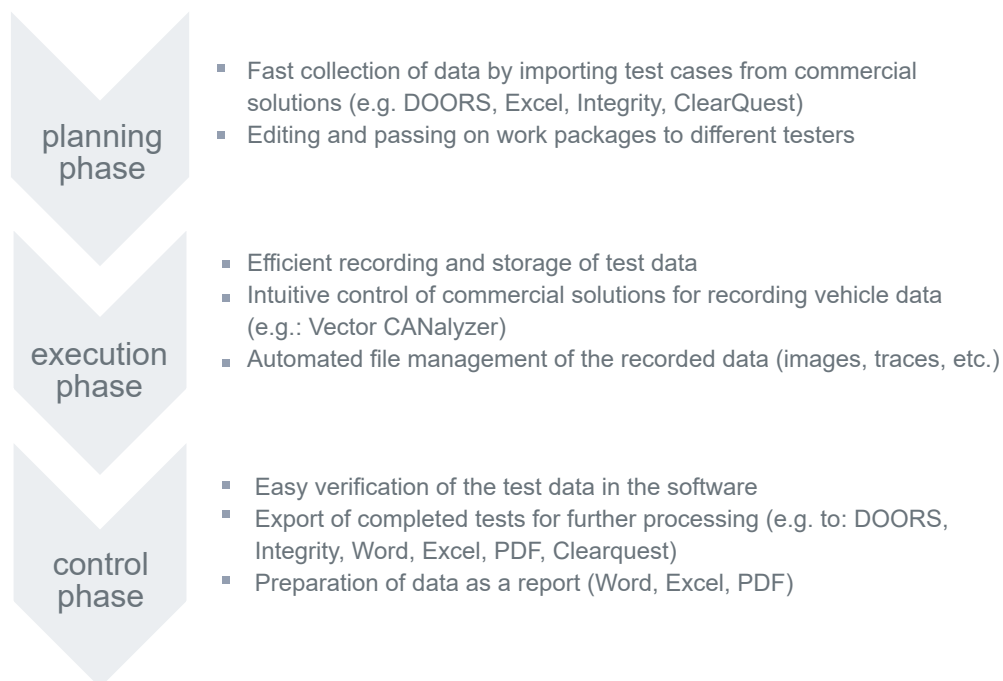
## Background

Compliance with relevant standards such as AutomotiveSPICE and ISO26262 with their high documentation and traceability requirements leads to significant additional work for vehicle testing. The procedures from component and subsystem testing cannot be adopted directly, since worldwide vehicle testing often does not provide sufficient access to the company infrastructure with requirements/change and configuration management tools.

The goal is to comply with the test process by using an interface tool and serve the interfaces and documentation requirements through automation in order to relieve the test driver of these tasks to a large extent.

## Our approach

MATAU is a process-driven interface tool. It has a structure adapted to the test process. In order to automate the work steps of the corresponding process level, the tool makes use of various interfaces to corresponding commercial solutions. These are controlled by MATAU during data collection and processing in order to relieve the user. The following graphic shows the generalized process of a vehicle test as well as the possibilities of MATAU to improve it.



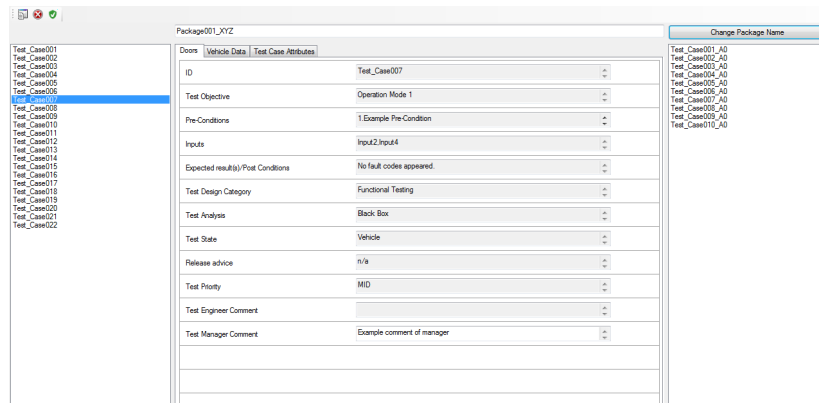
*innovation made by talents*

# MATAU - Manual Test Automation

Automation and assurance of ASPICE compliant processes in vehicle testing

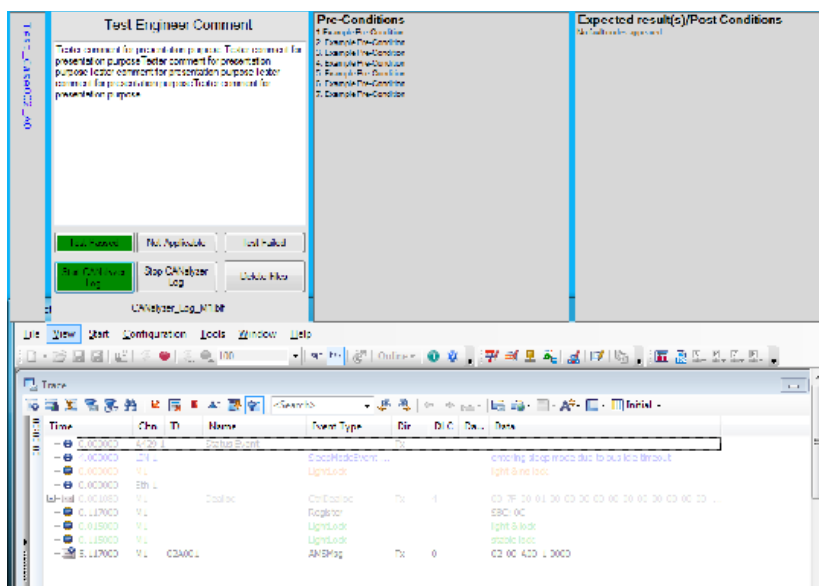
## Planning phase

In the planning phase, first the data is collected from the tools of choice (e.g. Doors, MKS). Afterwards, it is possible to check the collected data, edit it and combine work packages. The picture shows the interface of the planning phase.



## Execution phase

In the execution phase, the tester can process test cases efficiently. For this purpose, all data recorded for the test case is automatically managed so that it can be further processed in accordance with the process. For this purpose, a clear and intuitive interface was developed that can easily integrate and control external programs (such as Vector CANalyzer).



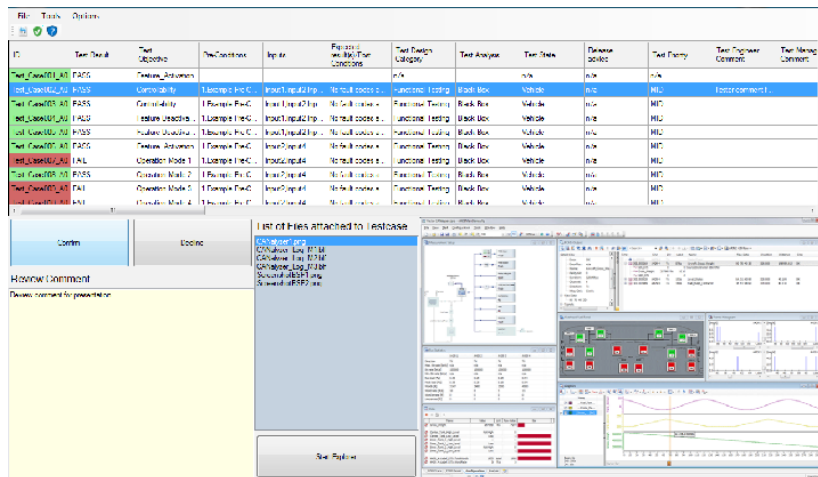
*Innovation made by talents*

# MATAU - Manual Test Automation

Automation and assurance of ASPICE compliant processes in vehicle testing

## Control phase

The last phase is used to check the test results. These can be accepted, rejected and adjusted. After the control has been completed, there are a number of options for proceeding with the data. Among other things, test results can be automatically transcribed. The adjusted data sets can also be automatically transferred to different servers or exported for commercial tools (e.g. DOORS, Integrity, Word, Excel or ClearQuest).



## Our offer

- Adaptation of the tool to the tool and process landscape. The INVENSITY interface library is used for common standard tools such as DOORS, PTC Integrity or Clearquest.
- Introduction of the tool and coaching of the employees

## Our references

This tool was developed in close cooperation with a global automotive supplier.

Kontakt  
Kai Hardy  
Principal Consultant  
kai.hardy@invensity.com

*innovation made by talents*